

WOOD FINISH

Natural wood and time-consuming finishes create a high-quality texture.

WOOD

FINISH



RO (Red oak) country of origin : North America
Along with walnut and mahogany, oak is one of the three major woods that represent Western furniture. The grain of the wood is characterized by a strong board pattern.

urethane coating



HO



AO



MO

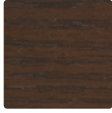


AL



BO

ROMK (Red oak quartergrain with knot)
You can choose a knotty specification depending on the product.



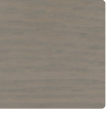
SD



CB



WO



CG



ON



OM

oil coating



WN (Walnut) country of origin : North America
It is heavy, well-finished, easy to work, and heavily used for furniture in Europe and the United States.

urethane coating



WN

oil coating



OM

WNK (Walnut with knot)
You can choose a knotty specification depending on the product.



WN/RO (combination)
You can order a combination of tree species depending on the product.

Eligible Products
DC341, DC347, DC371, DC046, LC030 urethane coating



CL



HO



MO

oil coating



ON

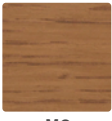


NR (White oak) country of origin : North America
White oak is strong in length and width, and has characteristic patterns such as tiger spots and silver grains, making it ideal for use as furniture wood.

urethane coating



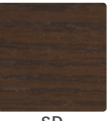
HO



MO



BO



SD



WO

NRK (White oak with knot)
You can choose a knotty specification depending on the product.



ON

oil coating



BC (Black cherry) country of origin : North America
The material has a dense, smooth surface and is water-resistant and durable. The color changes over the years from light pink to dark reddish brown.

urethane coating



CL

oil coating



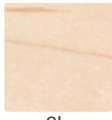
ON

BCK (Brack cherry with knot)
You can choose a knotty specification depending on the product.



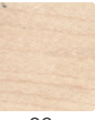
MP (Hard maple) country of origin : North America
It has a silky luster and is a tough material. Over time, it changes to a gentle Obaku color.

urethane coating



CL

oil coating



OC

Please note that even with the same coating specifications, the coating etch will vary depending on the type of wood.

FABRIC

We carefully select fabrics that can be used for a long time and never get tired of being used.

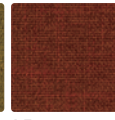
DAILY RANK 1 The selection focuses on upholstery fabrics that can be washed in the process.
We carefully select fabrics that are ideal for everyday use, like everyday clothing.



AF342



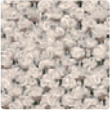
AF343



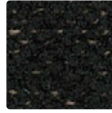
AF344

Kasuri style fabric using slub yarns in the warp and weft. The soft Scandinavian colors and washable (hand wash only) and easy to care for. It can be used for both casual and modern purposes.

● polyester 100%



AF410



AF413



AF414

This washable type has the soft touch of soft braid yarn.

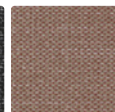
● polyester 100%



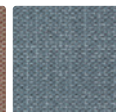
AF470



AF471



AF472



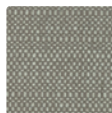
AF473

This yarn-dyed textile enables complex costume expression through efforts starting with the production of yarn using 100% recycled materials. It can be used for a long time with a deep look like natural materials.

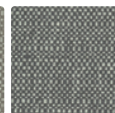
● polyester 100%



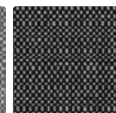
AF491



AF496



AF497



AF499

The braid yarn is used in the front, and the irregularly combined structure called butcher's knit creates a three-dimensional effect. This standard modern fabric has an appealing softness created by the random appearance.

● polyester 100%



AF545



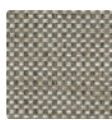
AF546

This fabric is a well-balanced combination of polyester braid yarns that are soft and soft to the touch and warp yarns that have a moderate luster. The overlapping colors of the shades of gray create an expression of depth.

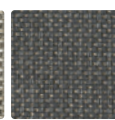
● polyester 100%



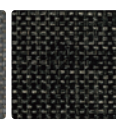
AF560



AF561



AF563

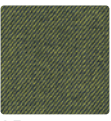


AF564

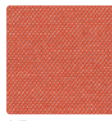
The combination of lustrous and top yarns expresses the depth of color. The rough structure of the fabric gives it a voluminous and prestigious feel.

● polyester 90% rayon 8% wool 1%

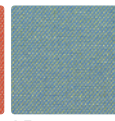
● acrylic 1%



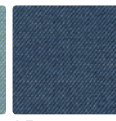
AF922



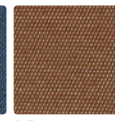
AF923



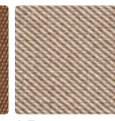
AF924



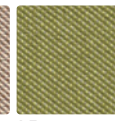
AF925



AF926



AF927



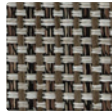
AF928

This twill fabric has a rich texture and feel with wool-like yarns. The deep color scheme combining different colored yarns enhances the form of the furniture.

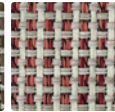
● polyester 100%



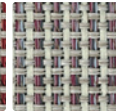
AF405



AF406



AF407



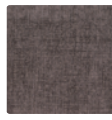
AF408

With colored yarns reminiscent of Japanese paper and braid yarns that retain a soft feel, this fabric has a natural material-like texture with a unique irregularity that is roughly woven into the fabric.

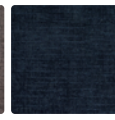
● polyester 100%



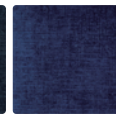
AF780



AF781



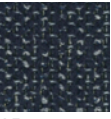
AF782



AF786

The glossy, elegant coloring creates a luxurious atmosphere. This fabric is recommended for an elegant and sophisticated modern space.

● polyester 100%



AF793



AF795

Fabric with a soft touch using braid yarn. Basic colors are available to fit easily into any room.

● polyester 100%

Please note that the upholstery fabric samples shown may differ from the actual product due to printing.

FABRIC

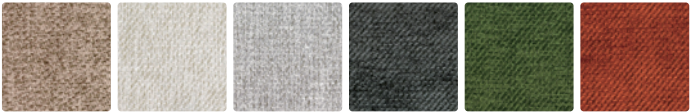
STANDARD RANK 2 A well-balanced selection of fabrics ranging from pet scratch-resistant fabrics to highly functional fabrics and natural materials. We have carefully selected fabrics to suit your lifestyle.



AF705 AF706 AF707

Made from wool raised in the Andes Mountains. This is an environmentally friendly natural material that does not use dyes, and the fabric is pleasant to the touch with little of the prickliness characteristic of wool.

● wool 57% ● polyester 43%



AF754 AF755 AF756 AF757 AF758 AF759

A volume type fabric made of shiny braid woven in a twill structure. The shadows woven by the light create an expressive space.

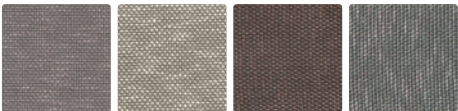
● polyester 100%



AF775 AF776 AF777 AF778 AF779

Design yarns of colored polyester are used vertically and horizontally. It gives the impression of a higher grade of quality, like wool, due to the excellent processing technology in Japan.

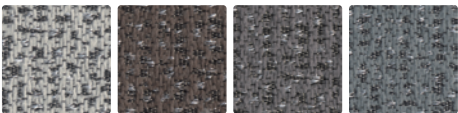
● colored polyester 100%



AF825 AF826 AF827 AF828

It is woven using cotton yarns with knots. It is characterized by its moderate volume and the mix of two colors of yarn twisted together. This fabric is rustic yet modern and gives a sense of calmness.

● cotton 65% acrylic 35%



AF865 AF866 AF867 AF868

Pseudo-mall is added to contrast the black and white bright yarns in the warp, resulting in a three-dimensional fabric that is easy to use with a low tone. It has a good hand-feel and can be used in a variety of situations.

● polyester 100%



AF830 AF831 AF832 AF833 AF834 AF835 AF837

The velvet-like density, simple marble-like shade expression, and smooth texture of this fabric are impressive. The short care and brushed lining give the fabric excellent strength against scratching by pets, and it has a fluffy and voluminous feel.



AF838

● polyester 100%



AF840 AF841 AF842 AF843 AF844

This plain fabric has a high quality look and feel, woven with shiny braid yarns in an organic jacquard pattern. The delicate structure and tight weave make it a scratch-free fabric that is resistant to pet scratching.

● polyester 100%



AF845 AF846 AF847

The fabric's plush, voluminous texture and uniformly large, well-rounded thoughtfulness give it the look and feel of genuine leather. It has an appealing feel on the skin that gives it a solid thickness.

● polyester100%



AF880 AF881 AF882 AF883 AF884 AF885 AF886

It is a high-spec functional furobirikku that combines a fine touch feeling, high stain removal properties, and strong durability, and is finished in a scratch-free fabric that is resistant to pet scratches. It is finished with a scratch-free fabric that is resistant to pet scratches.



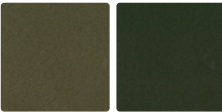
AF887

● polyester 100%



AF890 AF891 AF892 AF893 AF894 AF895 AF896

Suede-like fabric with a fluffy, smooth feel. The special treatment makes it resistant to color fading and shrinkage, and it also has excellent water repellency and stain resistance properties, providing comfort in daily life.

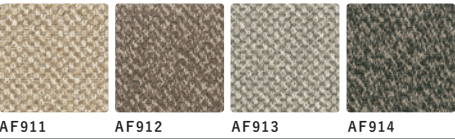


AF897 AF898

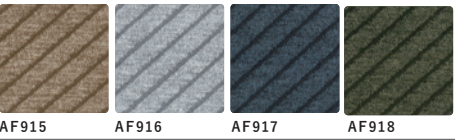
● polyester 100%

FABRIC

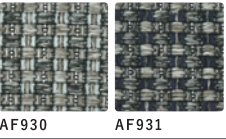
SUPERIOR RANK 3 A selection of articles of a higher grade, from yarn to material to weave.
We carefully select the best articles that create a high quality space.



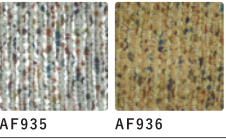
High-contrast coloring expresses a sense of mixing. It has high bulkiness and a volume that does not easily wear out. Partially made of recycled polyester, this fabric is environmentally friendly.
● polyester 100%



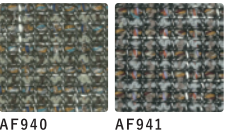
A double-knit fabric with a quilted texture that has a strong presence. It is knitted with environmentally friendly 100% chemical recycled polyester.
● polyester 100%



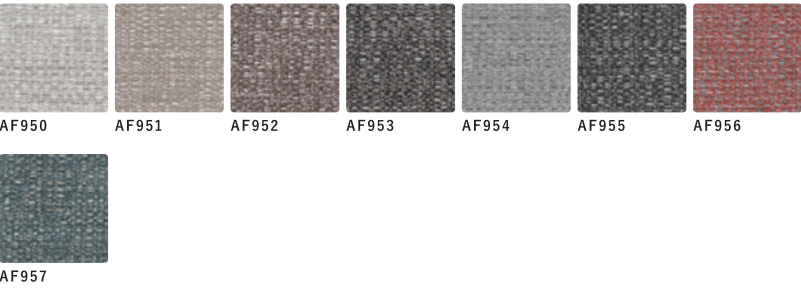
It is a washable tweed with a rough, voluminous feel. The mixed yarns add depth to the fabric and enhance the atmosphere of the interior.
● polyester 100%



Volume type fabric woven with soft and woolly braid yarns and multi-colored dyed braid yarns. At first glance, it has a gorgeous atmosphere, but when viewed over a larger area, it has an appealingly calm impression.
● polyester 100%

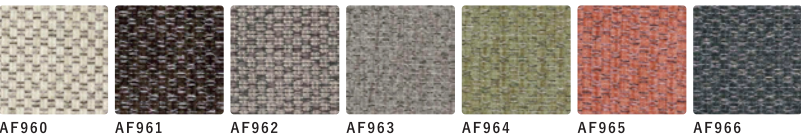


This tweed-like volume fabric is made of a generous amount of multicolored wooden and wool ring yarns. You will enjoy the warm look and feel typical of upholstery fabrics.
● polyester 57% wool 20% cotton 14% acrylic 6% nylon 3%

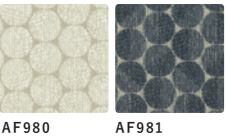


Equipped with "Aqua Clean" technology that can remove daily stains that are a problem for fabrics, using only water. Combination of mokume and braid yarns for a soft mix of textures. This popular multi-purpose product can be used in a wide range of fields from residential to contract.

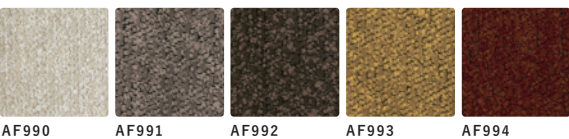
● polyester 96% cotton 4%



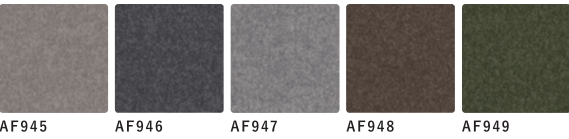
The warp yarn has been devised to create a natural uneven texture, and thick acrylic braid yarn with plenty of volume has been woven into the fabric to give it a firm, uneven texture. This fabric is basic, yet has a different presence.
● acrylic 53% polyester 47%



The design blends the natural beauty of Scandinavia with the essence of Japaneseness to create a gentle space. The fabric is woven with pure silver thread mu-fan, which has excellent antibacterial, deodorizing, and electrifying functions.
● polyester 100%



Equipped with "AquaClean" technology that removes everyday dirt with just water. This fabric features a comfortable feel due to its uneven surface.
● polyester 100%



This series has the cleanability to remove daily stains, which are a problem for fabrics, using only water. The flocking process gives the fabric a smooth feel, reduces yarn snagging, and is stronger than ordinary fabrics, making it suitable for use with pets.
● polyester 100%

Please note that the upholstery fabric samples shown may differ from the actual product due to printing.

LEATHER (natural leather) We carefully select leathers that make the most of natural materials.



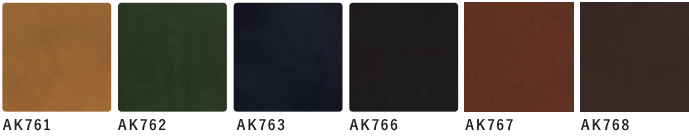
It is a medium-thickness leather stamped type. The surface of the leather is stamped with a silver surface, but the natural grain of the leather is utilized to give the material a voluminous feel.

● urethane



The silver surface is raised and coated with oil, dye, and a special coating, allowing the unique aging process of vintage leather to be enjoyed.

● oil

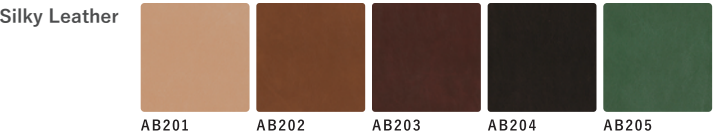


The leather, which contains a lot of vegetable tannin material, is finished with dyes and oils to emphasize its leatheriness. Scratches and stains can be enjoyed as one of the expressions of leather.



● oil

SYNTHETIC LEATHER Easy care and stable quality.



Soft synthetic leather with a soft touch and deep aniline leather-like tones. It is finished with an elegant luster that gives it a silky, supple look. You can enjoy a comfortable and relaxed feeling not only in modern and vintage styles, but also in a variety of situations.
● vinyl chloride